

KIT PRODUCT TECHNICAL DATASHEET

SET BR21/354

Encoder 
Brushless 



Composition SET BR21/354

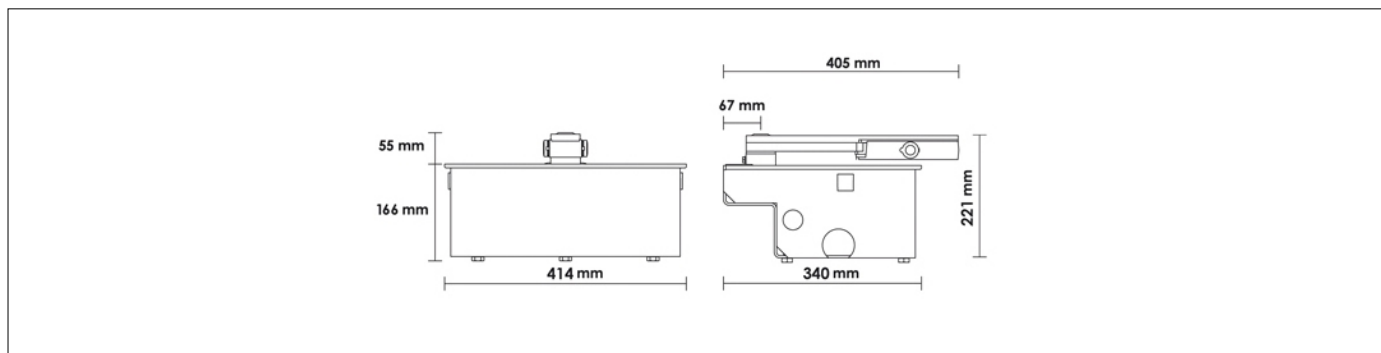
CODE	DESCRIPTION	QTY
BR21/351	Electromechanical underground motor, BRUSHLESS, low voltage, super intensive use, with native encoder onboard, irreversible, ideal for swing gates with leaf up to 4,5 mt. Standard version with 2 mt cable.	2
FU101	Hot galvanized foundation box and lid.	2
RL650	Release system with standard lever.	2
KIT EDGE1/20	Electronic kit with digital controller 36V EDGE1/BOX for two motors BRUSHLESS.	1
	Composition KIT EDGE1/20	
	EDGE1/BOX Digital control 36V for two BRUSHLESS motor, with plastic box.	1
	H93/RX22A/I Plug-in receiver 2 channels 433,92 Mhz (500 Storable codes) for control unit series H70, B70, EDGE and CTRL.	1
	SYNUS/2 Dual code transmitter (modality fixed code or rolling code), 433,92 Mhz. 2 channels, with radio for copy.	2
	R90/F4ES Pair of external photocells synchronized 24V AC/DC (max. 4 pairs).	1
	FIFTHY/24 LED flashing light series FIFTHY 24V with integrated antenna.	1
	R99/C/001 Signboard "Automatic Opening"	1

PRODUCT TECHNICAL SPECIFICATIONS

Power line supply	230V AC - 50 Hz
Motor power supply	24V - 36V
Power rating	200W
Frequency of use	Intensive use
Torque	50 - 300N m
Operating temperature	-20+55°C
Protection level	IP67
Reductor Type	Irreversible

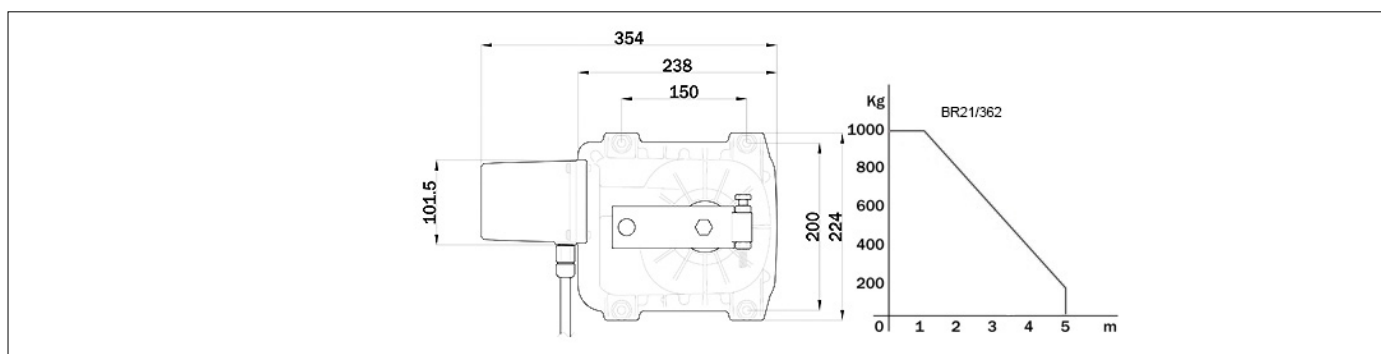
Manoeuvre speed	1,2 Rpm
Opening time at 90°	19-29 s
Limit switch	Mechanical stoppers
Encoder	Digital native encoder SENSORLESS 48 PPR
Maximun opening	105°(optional 125° - 360°)
Power supply cable length	2m
Bearing on main shaft	Standard
Operating cycles per day (opening/closing - 24 hours no stop)	1300
Maximum dimension product in mm (L x W x H)	345 x 224 x 144
Product weight packed (Kg)	70,5

PRODUCT DIMENSIONS AND PREPARING FOR INSTALLATION



DIMENSIONS

PRODUCT PREPARING FOR INSTALLATION



PREDISPOSITION FOR STANDARD INSTALLATION

PRODUCT ACCESSORIES

LT300 Levers for opening up to 125°.	LT301 Levers for opening up to 360°.	LT301/R Levers for opening up to 360°, with reinforced chain.	LT300/90SX Levers for opening up to 103° - 90° turned - left.	LT300/90DX Levers for opening up to 103° - 90° turned - right.	LT327/SC Pinion gear ¾ Z13 of adaptation in pinion ombining ¾ Z16.
RL650/R Release system with standard lever, reinforced steel version.	RL651 Release system with european cylinder key.	RL663 Long release lever for underground.			