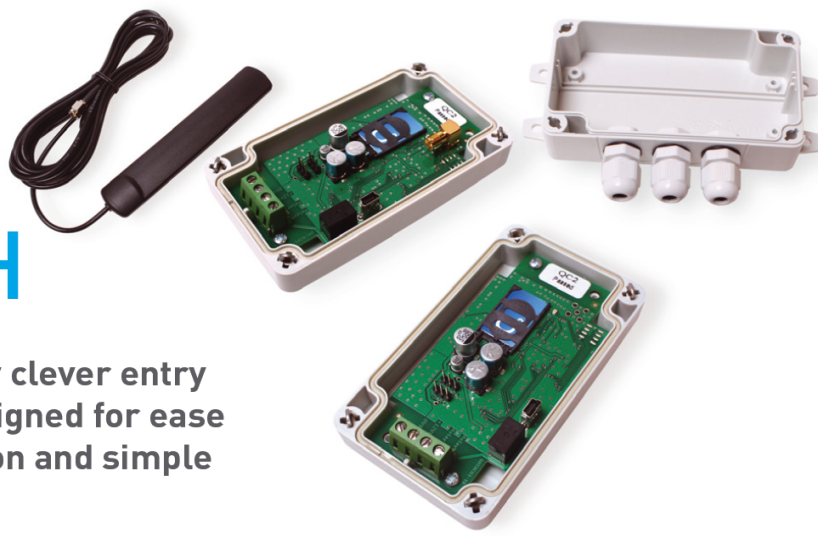


THE NEW GMT-RC01 GSM SWITCH



The GMT-RC01 is a basic but very clever entry level GSM switch specifically designed for ease of programming, quick installation and simple operation for the end user.

Far too often GSM switches or keys are over featured and much too complicated for simple everyday operations. Working with our electronic design partners we have developed the GMT-RC01 which has unending uses and possibilities if all you need to do is simply turn something on/off or open and close remotely over the GSM network.

Programming is by simple to operate computer software that enables the GMT-RC01 to be set-up quickly by plugging into a computer. Drop down instructions will step you through every stage as opposed to just SMS texting alone which can be both time consuming and awkward. SMS programming is also available and can be useful where remote changes, without visiting the site, are required.

The GMT-RC01 can be used as a stand-alone switching device - or incorporated with other equipment into a single housing where there is a more complex integrated installation of which the switcher is just a part. The GMT-RC01 is ruggedized for outdoor use and comes in an IP65 rated external weatherproof housing

The GMT-RC01EX is also available supplied with an external antenna (connected via an onboard SMA connector) for use in applications where the signal strength is such that the antenna needs positioning away from the unit.

The GMT-RC01 and GMT-RC01EX are extremely competitively priced and have been developed after extensive 2 year market research. They are the first of our new range of unique GSM products to be launched over the coming months.

OEM and electronic design project enquiries are welcome. Bespoke software is available to incorporate any company logo or contact details.

- Single relay output
- Relay time function (programmable)
- GSM signal strength indication
- Up to 5 administrators with programming authority
- Memorise up to 200 User telephone numbers
- Free programming software for PC
- Can also be programmed by SMS
- Model EX is available with SMA type connector for external antenna
- CE marked
- ROHS compliant
- IP65 enclosure
- Superb build quality
- Dimensions 90 x 110 x 40mm
- 2 year warranty

