

# SYNUS

The elegance  
of the wave



# SYNUS

The very modern shape, the small size and the ergonomic buttons define the new **SYNUS**. **SYNUS** represents the new design proposal of the remote family branded by **Roger Technology**.

## AVAILABLE PRODUCT CODES

CODE	DESCRIPTION
SYNUS/2	Bi-code remote control (Fixed Code or Rolling Code mode), 433.92 MHz, 2 channels, with copy function
KIT SYNUS/2	Package of 10 SYNUS/2 remote controls

## Advantages



### BI-CODE TECHNOLOGY

Communication with both Fixed Code and Rolling Code radioreceivers thanks to its new hybrid system



### HIGH QUALITY SILK SCREEN PRINTING

Paintwork and silk screen printing with high quality materials



### SAFETY

Evolved data processing degree to ensure a high level of security



### MEMORY FUNCTION

Compatible with all Fixed Code remote controls series E80, M80 ("copy" procedure)



### ELEGANT DESIGN

Compact and ergonomic design, easily attachable to the key-chain ring



### REPLACEABLE BATTERY

Easy, intuitive and ultra fast battery replacement

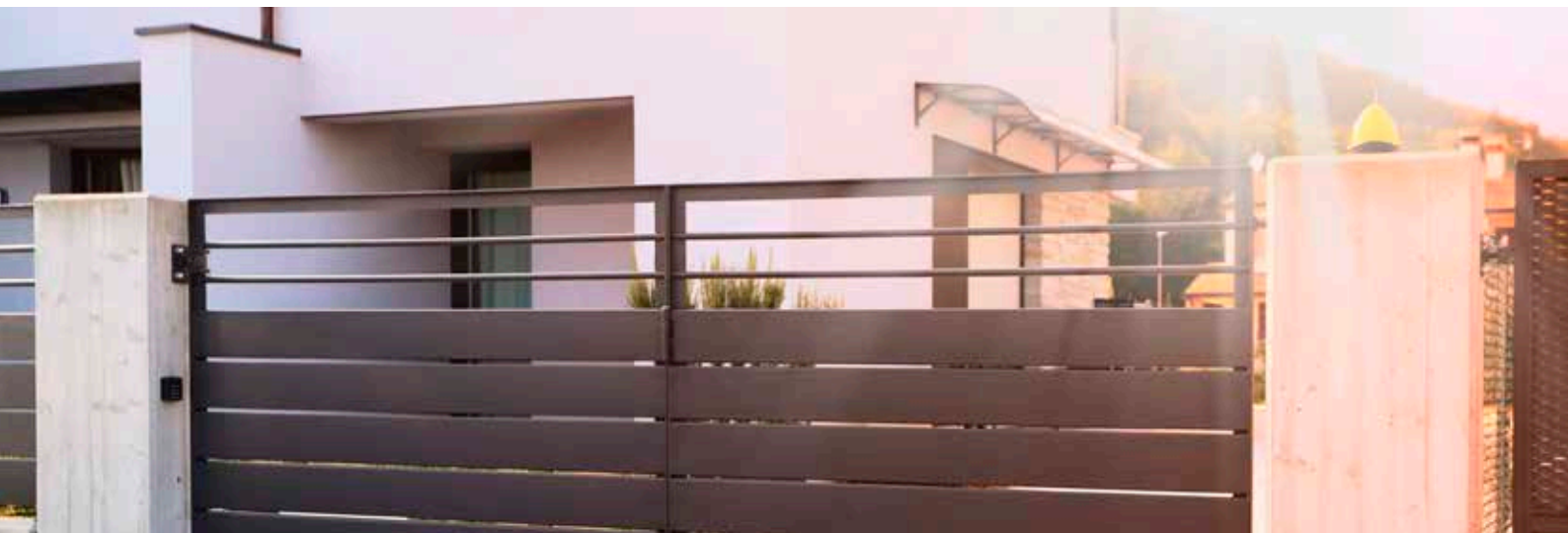
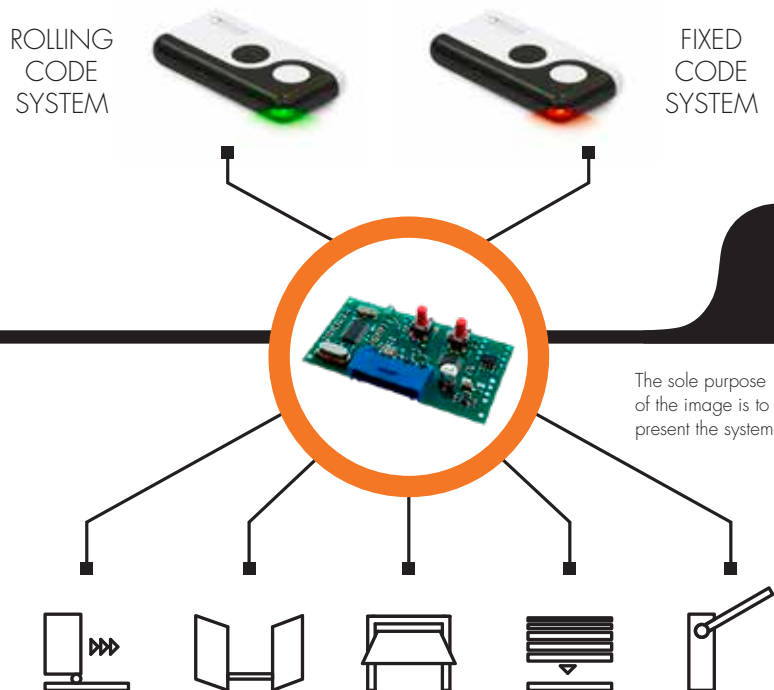
## Fast battery replacement

The new **SYNUS** remote control was designed to ensure fast and intuitive battery replacement. Thanks to the single screw closing system with plastic interlocking hook, the remote control can be easily opened, without losing components. This way, the battery can be easily and quickly replaced.



# Compatible with all your Roger automation systems

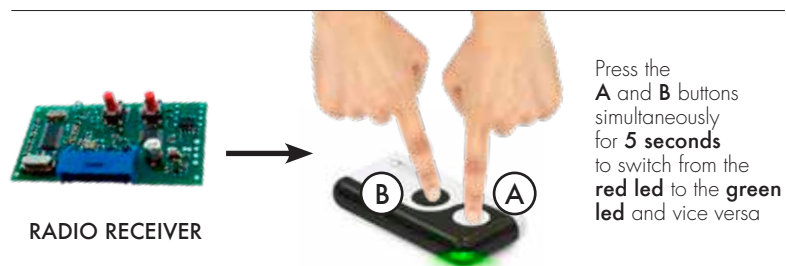
**SYNUS** is a universal control system, for residential, multi-dwellings, commercial and industrial locations. Thank to its easy activation and installation, **SYNUS** can be combined with all **Rolling Code** and **Fixed Code radio receivers**; for the latter, the "copy" function is guaranteed with the **E80** and **M80 series** with 2 or 4 channels. Therefore, **SYNUS** can be used for existing installations as well.



## BI-CODE technology

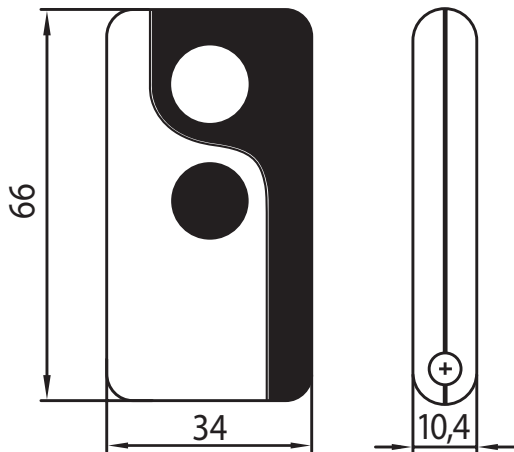
**SYNUS** is equipped with the innovative **BI-CODE technology**. This allows programming the **SYNUS** remote control with all **Roger Technology** radio receivers, for both **Rolling Code** and **Fixed Code** use, keeping the two codes in memory. In this way, switching from one code to another, already stored in **SYNUS** is a matter of seconds: just follow the Led colour change procedure.

The **Fixed Code native SYNUS** remote control can be configured to **Rolling Code** by following the procedure below



The configuration procedure to switch from the **Rolling Code** to the **Fixed Code** is the same.

# Technical specifications



If not specified, all dimensions are expressed in millimetres

TECHNICAL SPECIFICATION	
Standard power supply:	3V DC
Power consumption:	8mA
Operating temperature:	-10+55 °C
Number of channels:	2
Codification:	Fixed Code or Rolling Code
Modulation:	AM/ASK
Carrier frequency:	433.92MHz
Number of combinations:	65.536 (Fixed Code) 4.294.967.296 (Rolling code)
Types of clonable fixed codes:	MANCHESTER, PCM, Max. 64 bit
Bit number of the identification code:	65.536 (Fixed Code) - 4.294.967.296 (Rolling code)
Number of bits transmitted:	28 (Fixed Code) - 144 (Rolling code)
Copy function:	YES (fixed code only)
Maximum distance in unobstructed environment:	150m
Battery:	Mod "CR2032" 3V
Maximum dimensions of the product, in mm (L x W x H):	38 x 68 x 11
Packaged product weight (Kg):	0,04

7/0/2018

IMMAGINE ASSOCIATI

## REMOTE CONTROLS COMPATIBLE WITH THE COPY FUNCTION

CODE	DESCRIPTION	TRASMISSION TYPE
E80/TX52R/2	Fixed Code remote control 433.92 MHz 2 channels with copy function	FIXED CODE
E80/TX54R/2	Fixed Code remote control 433.92 MHz 4 channels with copy function	FIXED CODE
M80/TX44R	Fixed Code remote control 433.92 MHz 4 channels with copy function	FIXED CODE

## COMPATIBLE RADIO RECEIVER

CODE	DESCRIPTION	CODIFICATION	NO. OF CHANNELS	FREQUENCY	MEMORABLE CODES
H93/RX22A/I	2 channels 433.92 MHz plug-in radio receiver for the H70, B70, EDGE and AG/CTRL series control units	FIXED CODE	2	433,92 MHz	500
R93/RX12A/I	2 channels 433.92 MHz plug-in radio receiver for the R70 series control units	FIXED CODE	2	433,92 MHz	500
R93/RX12A/U	UNIVERSAL 433.92 Mhz 2 channels radio receiver. In plastic case	FIXED CODE	2	433,92 MHz	500
H93/RX2RC/I	2 channels 433.92 MHz plug-in radio receiver for the H70, B70, EDGE and AG/CTRL series control units	ROLLING CODE	2	433,92 MHz	250/1000
R93/RX2RC/U	UNIVERSAL 433.92 Mhz 2 channels Rolling Code radio receiver in plastic case	ROLLING CODE	2	433,92 MHz	250/1000



Via S. Botticelli, 8 - 31021, Bonisiolo di Mogliano Veneto (TV) - ITALY  
T. +39 041 5937023 - F. +39 041 5937024

WWW.ROGERTECHNOLOGY.COM

Follow us:

